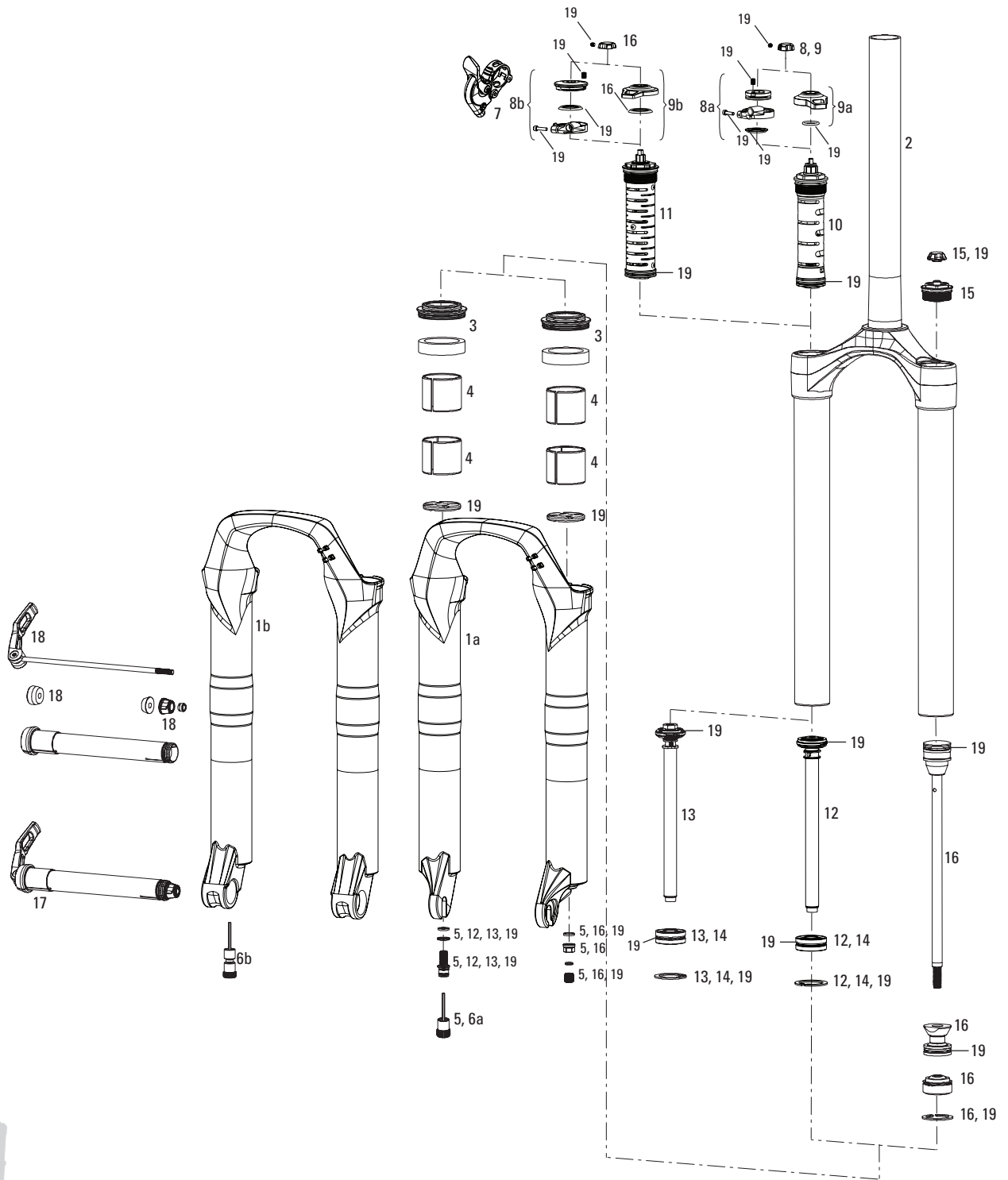


REVELATION - DUAL AIR - MOTION CONTROL - 150mm (2010)



Note:

IMPORTANT - 2010 Revelation: 150mm spring assembly and NOT compatible with 2006-2008 Revelation forks (and vice-versa). Do NOT attempt to increase travel on any 06-08 Revelation fork.

1. All service kits include any and all replaceable o-rings, retaining rings, crush washers, crush washer retainers, and shaft bolts/nuts. Air service kits include schrader valve(s).
2. Rebound damper and spring shaft kits include crush washers, crush washer retainers and shaft bolts, as well as upper tube retaining rings and rebound adjuster knob.
3. Damper side = rider's right. Spring side = rider's left.
4. Convert from Crown Adjust to Remote Adjust: Remote compression damper requires remote compression adjuster spool, and remote lever assembly.
5. Revelation lower legs do not include decals. All lower legs include bottom-out bumpers, bushings, foam rings and dust seals installed.
6. Refer to the 2010 RockShox Technical Manual (www.sram.com) for oil volumes, air pressure settings and torque values.

REVELATION - DUAL AIR - MOTION CONTROL - 150mm (2010)



No.	Part Number	Description
1a	11.4015.395.010	Lower Leg, 9mm QR, White - 2010 Revelation
1a	11.4015.395.020	Lower Leg, 9mm QR, Black - 2010 Revelation
1b	11.4015.395.030	Lower Leg, Maxle Lite, White - 2010 Revelation
1b	11.4015.395.040	Lower Leg, Maxle Lite, Black - 2010 Revelation
2	11.4015.396.010	CSU, Dual Air, White, 1 1/8" - 2010 Revelation
2	11.4015.396.020	CSU, Dual Air, Black, 1 1/8" - 2010 Revelation
ns	11.4015.396.050	CSU, Dual Air, White, Tapered (1.5" - 1 1/8") Steerer - 2010 Revelation
ns	11.4015.396.060	CSU, Dual Air, Black, Tapered (1.5" - 1 1/8") Steerer - 2010 Revelation
3	11.4310.290.000	Tora/Recon/Revelation/Argyle Dust Seal/Foam Ring Kit
4	11.4015.405.010	Lower Leg Bushing Kit - 2010 Revelation (Upper 15mm x Lower 30mm)
5	11.4015.403.010	Shaft Fastener Kit, Aluminum - 2010 Revelation
6a	11.4310.645.000	Rebound Adjuster Knob/Bolt Kit, Aluminum Red, Short
6b	11.4015.404.010	Rebound Adjuster Knob/Bolt Kit, Aluminum Red Long (use with Maxle lower leg)
ns	11.4308.849.000	PopLoc Adjust Lever Left
ns	11.4309.208.000	PopLoc Adjust Lever Right
7	11.4015.197.000	PushLoc Remote Kit L/R (includes: PushLoc assembly Left Vertical, R/L levers, vertical & horizontal clamps, MatchMaker knuckle R/L, cable & housing)
ns	11.4015.314.010	Compression Remote Spool/Internal Floodgate Cap/Cable Clamp Rmt AL Motion Control - Reba Revelation (09-10)
8a	11.4015.295.000	Compression Remote Spool/External Floodgate Adjuster Knob/Cable Clamp AL Motion Control - SID Reba Revelation (09-10)
8b	11.4015.295.010	Compression Remote Spool/Floodgate Adjuster Knob/Cable Clamp, Aluminum, Black Box Motion Control - SID Reba (09-10)
ns	11.4015.314.000	Compression Knob/Internal Floodgate Cap AL MotionControl - Reba Revelation (09-10)
9a	11.4015.294.000	Compression Knob/External Floodgate Adjuster Knob Alum, Motion Control - SID Reba Revelation (09-10)
9b	11.4015.294.010	Compression Knob/Floodgate Adjuster Knob Carbon Black Box Motion Control - SID Reba (09-10)
ns	11.4015.315.010	Compression Damper Motion Control Internal Gate Remote Adjust-Reba Revelation (09-10)
ns	11.4015.315.000	Compression Damper Motion Control Internal Gate Crown Adjust-Reba Revelation (09-10)
10	11.4015.316.000	Compression Damper Motion Control External Gate Crown Adjust-Reba Revelation (09-10)
10	11.4015.316.010	Compression Damper Motion Control External Gate Remote Adjust-Reba Revelation (09-10)
11	11.4015.296.020	Compression Damper, Standard Adjust, Black, Black Box Motion Control (comp knob/gate knob) - SID Reba Revelation (09-10)
11	11.4015.296.030	Compression Damper Remote, Black, Black Box Motion Control (cable clamp/spool/gate knob) - SID Reba Revelation (09-10)
12	11.4015.397.010	Rebound Damper/Seal Head Assembly, Motion Control - 2010 Revelation
13	11.4015.397.020	Rebound Damper/Seal Head Assembly, Black Box Motion Control - 2010 Revelation
14	11.4015.353.010	Seal Head, Rebound Damper, Motion Control (09-10 SID/Reba)
15	11.4015.298.000	Air Top Cap Assembly, 32mm, Black (all 32mm air forks)
16	11.4015.394.000	Air Spring Assembly, Dual Air - 2010 Revelation
17	11.4015.198.010	Maxle Lite, Complete, 32mm (complete assembly)
18	11.4311.722.010	Maxle Lite, Axle/Lever/Wedge Kit, 32mm
19	11.4015.406.000	Service Kit, Dual Air/Motion Control - 2010 Revelation
20	11.4311.742.000	Reba/SID WC Cable Stop Clamp
ns	11.4015.410.010	Decal Kit, Red - 2010 Revelation
ns	11.4015.410.020	Decal Kit, Silver - 2010 Revelation
ns	11.4308.327.002	Schrader Valve Core Qty 2
ns	11.4309.073.000	Kit Disk Brake Cable Accessory
bulk	11.4015.259.000	Crush Washer 8mm, Qty 50
bulk	11.4015.260.000	Crush Washer Retainer, Qty 50
bulk	11.4310.693.000	Reba/Pike/Tora/Recon/Revelation Lwr Bushing Qty 20
bulk	11.4015.301.010	08-10 SID 32mm Upper Bushing, Qty 20
bulk	11.4310.695.000	Tora/Recon/Revelation 32mm Dust Seal Qty 20
bulk	11.4310.698.000	Tora/Recon/Revelation 32mm Foam Ring Qty 20
bulk	11.4015.284.000	Star Nut 1.125" Qty 20
tool	11.4308.297.000	High-Pressure Fork/Shock Pump (300 psi Max)
tool	11.4308.300.000	Rockshox Schrader Valve Removal Tool